



1890 Swarthmore Avenue, PO Box 2020, Lakewood, NJ 08701
Phone: 800-526-3694, 732-363-4700, Fax: 732-364-8110
www.encoreplumbing.com • www.componenthardware.com

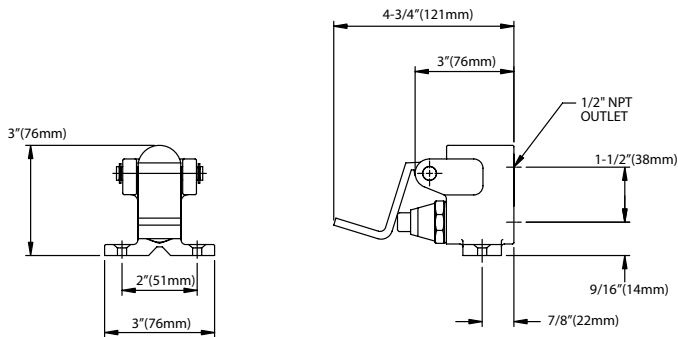
PROJECT NAME: _____

LOCATION: _____

SPECIFIER ITEM NO. _____ **QTY:** _____

ENCORE PART NO. _____

Encore® Single Pedal Foot Operated Valve KL25-2000



Dimensions shown in inches (mm) are for reference only and are subject to change.

Pedal Valve:

(1) 1/2" NPT Female Inlets
(1) 1/2" NPT Female Outlet
Operating Temperature: 40 - 180°F
Operating Pressure: 20 - 125psi
#10 mounting holes

Approximate shipping weight - 3 lbs
Warranty - 2 years parts

Solid heavy duty cast brass

Commercial Quality Features

- Foot operated valve
- For use with spout bases
- Self-closing valve
- Color indexed pedal
- Single pedal operation
- (1) 1/2" NPT female inlets and (1) 1/2" NPT female outlet
- Rough chrome valve body with highly polished chrome foot pedal

SPECIFICATIONS:

Single foot pedal to be Encore KL25-2000. Single foot pedal valve to be constructed of polished chrome plated brass with total lead content less than 0.25% by weighted average. Valve to be self-closing. Foot pedal to be brass with color-coded indicator for hot or cold.

COMPLIES WITH:
ASME A112.18.1-2005
CSA B125.1-05
NSF/ANSI 61/9, ANNEX G
SECTION 116875 OF THE
CALIFORNIA HEALTH & SAFETY CODE
(COMMONLY KNOWN AS AB1953)
VERMONT ACT 193
UNIFORM PLUMBING CODE

