

## POWER SCRAPPER

### Automatic Scrapper

- Automatic high pressure cold water system
- No heat source is required
- No venting is required
- Removes soil from compartment trays at a typical processing rate of 1000 trays per hour
- Variable speed drive can be adjusted for the level of debris on the trays
- Stand alone option designed to scrap trays before washing and sanitizing in a separate tray washer or dishwasher
- Perfect companion for an Insinger Traywasher and Tray Dryer



### STANDARD FEATURES

- SureFire® Start-Up & Check-Out Service
- 5 hp pump (50 psi)
- Vertical spray system
- Heavy and durable stainless steel construction
- Stainless steel frame, legs and feet
- Oversized scrap basket
- Sensors for scrap basket in place
- Automatic tank fill
- Low water protection
- Side mounted NEMA 4X control enclosure
- Standard frame TEFC motors
- Inspection lids
- Vacuum breaker on incoming water line
- Single point electrical connection for motors and controls

### OPTIONS

- ☐ Tables
- ☐ Tray carriers (lot of 10)
- ☐ Security package: Hasp and lock on all lids, perforated cover on control panel, cover for cold water fill, undermesh
- ☐ Additional Scrap baskets

Power Scrapper

### AUTOQUOTES



## SPECIFICATIONS

**CONSTRUCTION**- 16 gauge, 18-8 type 304 stainless steel. S/S frame, legs and feet.

**LIDS**- 16 gauge, 18-8 type 304 stainless steel.

**CONVEYORS**- 3 variable-speed urethane belts.

**MOTOR**- 1/8 hp conveyor motor, variable-speed.

**PUMP**- 5 hp TEFC

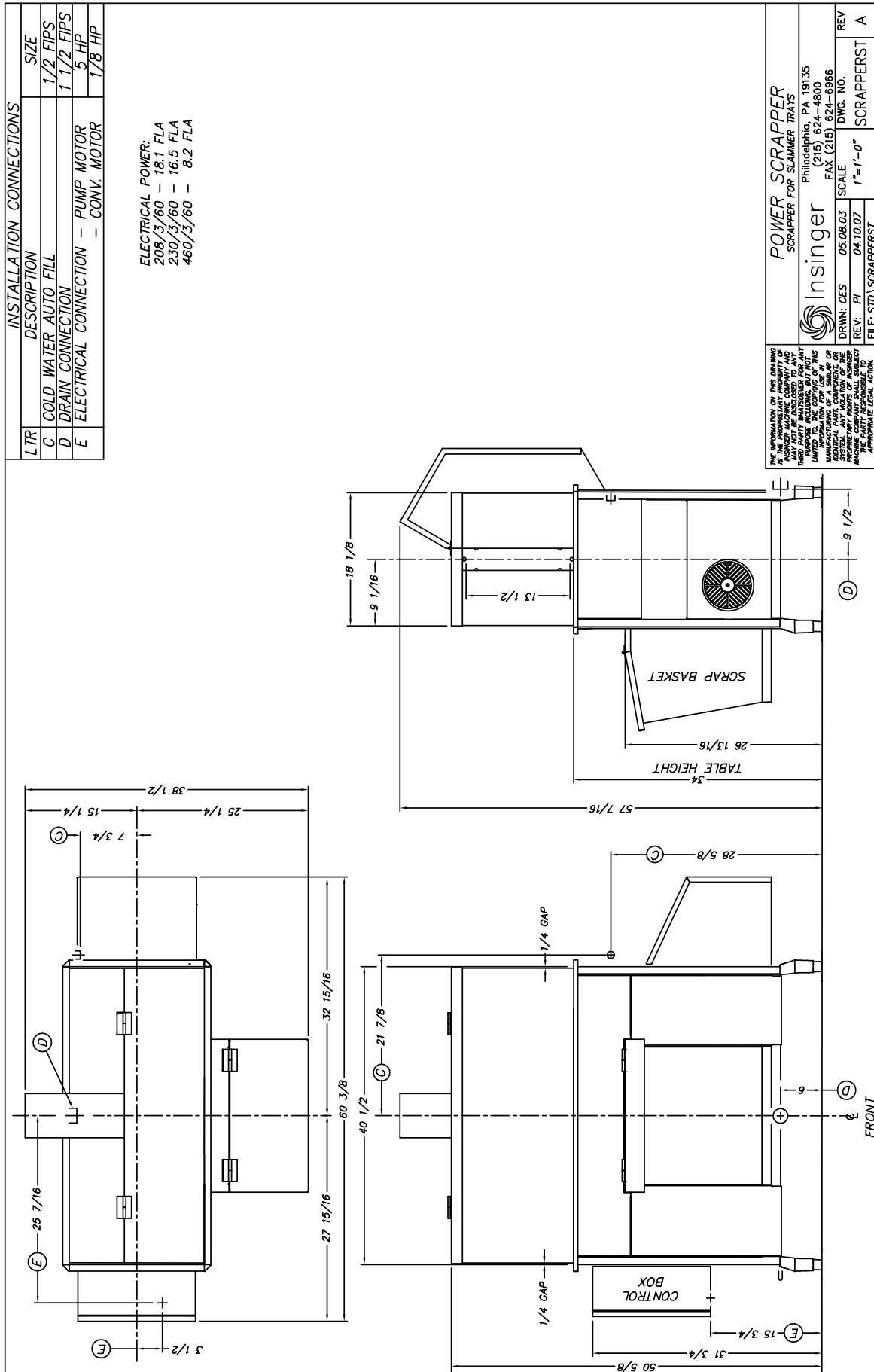
**CONTROLS**- NEMA 4X enclosure, 16" x 16" x 6"

**SPRAY SYSTEM**- 10 nozzles on 5 vertical arms (2 each). 50 psi 70 gallon per minute.

**DRAIN**- 1 1/2" FIPS

Capacity Per Hour	1000 9" trays per hour
Pump	5 hp
Shipping Weight	300 lbs.
Current Draw Amps	
208/3/60	18.1 FLA
230/3/60	16.5 FLA
460/3/60	8.2 FLA

Note: Due to product improvement we reserve the right to change information and specifications without notice.



Contact Insinger Sales at 800-344-4802 for an Installation Drawing Specific to Your Application  
 This drawing is available on the Insinger Web site at [www.insingermachine.com](http://www.insingermachine.com)

**Power Scrapper**